

# Find and Replace Tool For Excel 3.0



Find and Replace Tool For Excel allows you to quickly and easily search and replace across thousands of Excel spreadsheets. Find and Replace Tool For Excel allows all user settings to be saved and opened so that the same tasks can be repeated in the future without re-keying.

## Overview

It also has a search-only mode, so you can identify which document(s) contain text that needs to be manually fixed.

## Running Find and Replace Tool For Excel

Find and Replace Tool For Excel has two very important pre-requisites when running.

1. Microsoft Excel should not be open (especially with open documents).
2. Excel Documents you are processing should not be open (no sharing also).

Both these situations lead to file sharing violations. Find and Replace Tool For Excel may appear to hang, and you will need to Alt-Tab to MS Excel to close the 'Open Read Only' dialog box.

This leads to our two recommendations when running Find and Replace Tool For Excel:

1. Please close ALL other applications. This ensures that no programs have an Excel document open.
2. If Find and Replace Tool For Excel says that MS Excel is still running, you may have to press Ctrl+Alt+Del to access the Task Manager and kill of all instances of EXCEL.EXE manually.

If you are running Find and Replace Tool For Excel across a network, file share or remote machine of any description, you MUST ensure that Find and Replace Tool For Excel has exclusive access to those files.

## Speed and Performance

To get the fastest speed out of Find and Replace Tool For Excel, few prerequisites are required.

- Ensure that you disable the virus scanning so that MS Excel can open the documents faster
- Close all other running applications

## Trial Version limitations and How to purchase and Register?

**Our trial version is full featured version** but for every process, you will be able to work with a limited number of files, which we think is sufficient to try before making a decision to purchase. It does not have any other limitation. When you purchase the application, we send you the registration code. You can register your application using this registration code and then there will be no limitation in the application.

## User Interface Guide

### A. [Adding Files to Process](#)

- (a) [Scan for Files](#)
- (b) [Get File Names from A Text File](#)
- (c) [Parse File Names from a Text](#)

### B. [Options](#)

- (a) [Password for Open/Modify](#)
- (b) [Log File Name Format](#)
- (c) [Required Find and Replace Count](#)
- (d) [Retain File Dates](#)
- (e) [Backup Mode](#)
- (f) [Process Read Only file](#)
- (g) [Process Longest "Find What" String First](#)
- (h) [Allow Alerts](#)
- (i) [Force to Control CPU Usage](#)
- (j) [Revision Document Property Name](#)
- (k) [Microsoft Excel Control](#)

### C. [Main Screen](#)

- (a) [Add Row](#)
- (b) [Delete Row](#)
- (c) [Swap Values](#)
- (d) [Find What](#)
- (e) [Replace With](#)
- (f) [Search Location](#)
- (g) [Search Options](#)
  - [Match Case](#)
  - [Match Entire Cell Content](#)
  - [Highlight Replacement](#)
- (h) [Replace Now](#)
- (i) [Search Now](#)

### D. [Import](#)

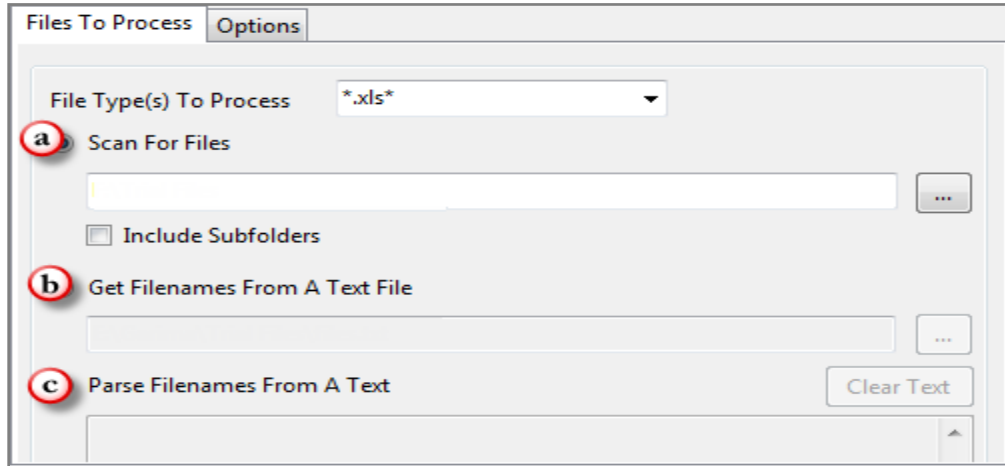
### E. [Export](#)

### F. [Process Screen](#)

- (a) [View Files](#)
- (b) [Expand All](#)
- (c) [Collapse All](#)
- (d) [Copy Filenames to Clipboard](#)
- (e) [Export](#)
- (f) [View Previous Logs](#)
- (g) [File Name](#)
- (h) [Status](#)
- (i) [Count](#)
- (j) [Start Time](#)
- (k) [End Time](#)
- (l) [Errors](#)

## A. Adding Files to Process

You need to select the Excel file(s), for which you want to run the application. There are three ways, you can select the file for the application.

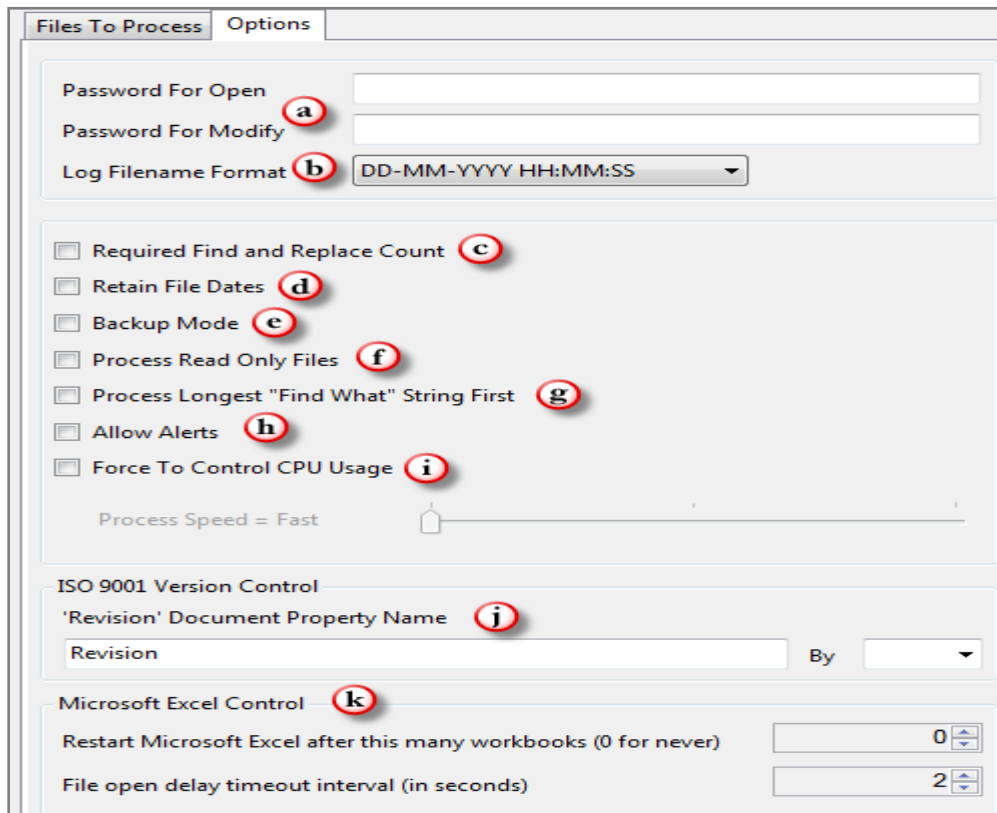


**(a) Scan for Files:** Browse and select the folder, which contains the files in the system. If you wish to include the sub-folders in the folder, you can check "Include Subfolder" also.

**(b) Get File Names from a Text File:** If you have a Text file, which contains all the file names including their paths, you can select the text file and the application will select the files to process. There should be only one file name in a line.

**(c) Parse File Names from a Text:** You can manually enter the file names along with their paths in each line.

## B. Options

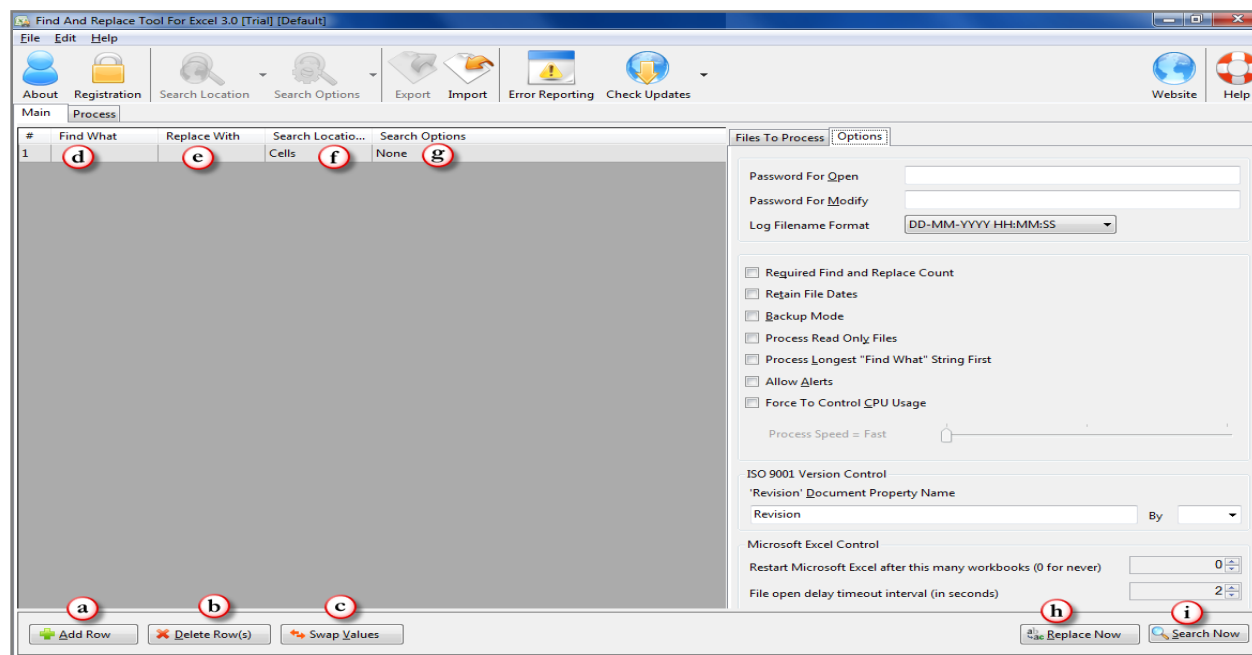


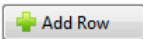
- (a) **Password for Open/Modify:** If you have the password protected Excel file to open or modify, you need to enter the password so that the application can read/modify the file as per your inputs.
- (b) **Log File Name Format:** You can choose the format for naming the log file. There are two formats available: DD-MM-YYYY HH:MM:SS and MM-DD-YYYY HH:MM:SS.
- (c) **Required Find and Replace Count:** Check this box, if you want to view the total no of changes done in the file after running the Find & Replace tool.
- (d) **Retain File Dates:** If you don't want to change the modified date stored in the properties of your Excel file, you may check this box.
- (e) **Backup Mode:** The tool will create a backup file after saving the changes to the new file. In the back-up file, the original file will be saved without any changes.
- (f) **Process 'Read-Only' file:** If you want to make changes to 'Read-only' files only, you need to select this check-box.
- (g) **Process Longest "Find What" String First:** The application will process the longest string first and shortest string at last.
- (h) **Allow Alerts:** During the process, if any alerts messages are coming, you can allow them by clicking at the check-box. This will help you in keeping a check before making any changes to the file.
- (i) **Force to Control CPU Usage:** You can control the process speed. If you go for Fast speed, this application will run faster and other applications currently running on your system will go slow.
- (j) **Revision Document Property Name:** You can increment (by +1.0 or 0.1) your ISO version property here. You can name your property name here. Default is 'Revision'.


**(k) Microsoft Excel Control**

- **Restart Microsoft Excel after this many Workbooks:** Application use Microsoft Office object model to make changes to your documents. We observed that sometimes its slow down after editing some large number of documents. Here we gave an option where you can restart the Microsoft Excel after a specific no of documents are processed.
- **File Open Delay Timeout Interval:** You can set the Timeout interval for the files. After set time interval if files cannot be open for editing, application skip that file and move to next file.

## C. Main Screen




**(a) Add Row:** Your first step after adding the files will be to add the rows by clicking at  in order to give your inputs to the application.

**(b) Delete Row:** You can select the row you want to delete and click at  or use Delete key on your keyboard.

**(c) Swap Values:** You can swap the values mentioned in "Find What" and "Replace With" columns by clicking at .

**(d) Find What:** You need to give the inputs for the strings, which you want to find in the file(s).

**(e) Replace With:** The string, with which you want to replace the current string in the file(s).

**(f) Search Location:** You need to select the location/s in the file(s), where you want the application to find the string. To select the location, you can either click at  in the toolbar or by selecting the individual Row and click at Search Location column for the respective file. You can select any location among the options given:

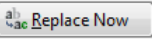
- Cells
- Header
- Footer
- Hyperlink Address
- Shapes and Textboxes
- Built-in properties
- Custom Properties
- Links
- Chart Titles
- Define Names


**(g) Search Options:** You can select the Search options either directly by clicking at



from the toolbar or by clicking at the search option column in the respective row. There are 3 options available.

- **Match Case:** If you select the Match case, the application will find the string in the given case only. By default, the application is not case sensitive.
- **Match Entire Cell Content:** When you click at this option, the application will search for the string, if it is the only content in the cell.  
For example, You have a string in a file "Business Time" and you wish to replace "Time" with "Hours". If you will select "Match Entire Cell content", the application will not replace "Time" in the cell contains "Business Time" but will only replace the string "Time", where "Time" is the only content in the cell.
- **Highlight Replacement:** If you want to highlight the changes done by the application in the file(s), you can select the option and the color, with which you want to highlight the change(s). You can specify multiple colors for different rows/changes.

**(h) Replace Now:** After setting all the details in the columns, click at  to start the replacement.

**(i) Search Now:** If you only wish to execute the Search in the file(s), click at  to initiate the Search.



## D. Export

You can export the 'Find What' and 'Replace With' list with other options. List is exported in our own format and in CSV format which you can import when you needed.

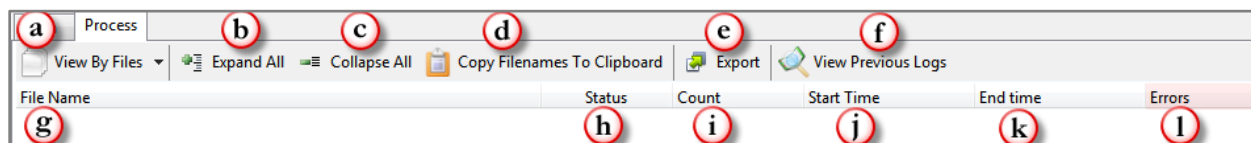


## E. Import

You can also import list. If you have list of 'Find What' and 'Replace With' items then you can just save these two columns in CSV file and you can import it here.

## F. Process

In this screen, you can view the files after the processing done by the application.



File Name	Status	Count	Start Time	End time	Errors

**(a)View By Files:** You can select the view of all the processed files by the file name/Find What string or by Location of the string in the file.

**(b)Expand All:** Select the file and click at this option, you shall be able to view the expanded form in the pane.

**(c) Collapse All:** Select the file and click at this option, you shall be able to undo the expanded form in the pane.

**(d) Copy Filenames to Clipboard:** You can copy the file names with their paths and paste it to any file. You can save the file names in the text file, which could be used for giving the inputs of the files in the form of Text file.

**(e) Export:** You can export list of files you can see in file grid into text delimited text file. All the columns you can see will be in exported text files separated by a tab.

**(f) View Previous Logs:** Once you are done with the task in Excel documents with the help of the "Find & Replace Tool for Excel 3.0", you can view the log file. All the changes are saved in the log folder. Default path for Windows 7 and Windows Vista is

C:\Users\<<Username>\AppData\Roaming\Winsome Technologies\Find & Replace Tool For Excel 3.0\Logs

**(g) File Name:** File names will be displayed in this column.

**(h) Status:** You can see the current status as Un-Processed/In Process/ Processed in this column.

**(i) Count:** If you have checked the option of "Required Find & Replace Count" in the Option menu, you shall be able to view the total counts found/replaced.

**(j) Start Time:** This will display the Start Time in the Time Format of your system.

**(k) End Time:** This will display the End Time in the Time Format of your system.

**(l) Error:** If due to any error, the application was not able to perform. You can view the error in this column.